



**STREAMLINE
SERIES**

TOGETHER WE ROLL

1" DRY FREIGHT DOOR

A Revolution in Roll-Up Truck Door Design

Since 1999, we have been manufacturing innovative PVC truck doors that offer the perfect balance of strength and flexibility.

PROFIT FROM SUPERIOR DOORS:

- Safer for Drivers
- Lightweight
- Water Tight
- Cleaner Design
- Germ-Free Panels
- Recyclable
- Save money!



MCLAREN DOORS
420 Industrial Parkway South
Aurora, ON
L4G 3V7

905-713-0772
1-877-263-9153
www.mclarendoors.com
info@mclarendoors.com

INDUSTRY LEADING 1" DRY FREIGHT DOOR FEATURES

PANELS

- Extruded structural PVC panels provides a lightweight door that will save up to an estimated \$600 in fuel cost during the life of the door while reducing the risk of driver injuries.
- Patented integral hinge does not require grease and will never rust.
- Our PVC design never requires painting and won't show scratches like other conventional doors.
- The McLaren door panel has a special additive that provides superior strength against UV damage and chemical corrosion.
- Our clean design provides protection against water and dirt penetration, as well as anti-microbial protection for a germ-free surface.
- Industry leading 5 year warranty against panel rotting, fading and delamination.

REINFORCEMENT

- Aluminum channels are strategically placed throughout the door to maximize strength while keeping our door lightweight.

ALUMINUM HINGE

- **NEW** Our Streamline hinge allows the doors to be installed in smaller sections making installation and repair faster and easier.

BOTTOM PANEL

- The bottom panel is a completely extruded .08" thick aluminum panel with an exterior PVC face plate. This provides extra impact protection against pallet jack and forklift damage.
- The through U-Bolt allows easy inside access to our unique and exclusive hidden cables design.

FASTENERS

- All fasteners are grade 4 stainless steel for optimal protection against corrosion.

TOP BRACKET ASSEMBLY

- Our low headroom galvanized steel top bracket and SS mounting plate are engineered for fast and easy adjustment.

ROLLERS

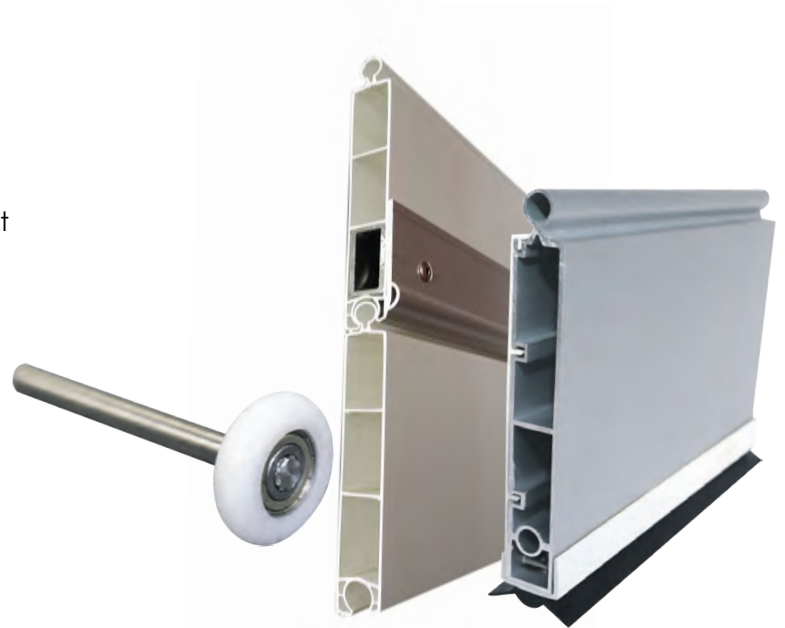
- Heavy duty 2" nylon roller with sealed stainless steel bearing and 4" shank provides a long lasting and strong roller that requires no greasing.

COUNTERBALANCE

- Our springs and shafts are galvanized to provide increased rust resistance.
- Optional dual galvanized spring assembly on request.

SEALS

- Designed with a 1 1/4" flexible rubber seal to ensure good seal contact, even on older frames. We also offer an additional header seal to increase your contact range up to 2".



MCLAREN DOORS
420 Industrial Parkway S.
Aurora, ON L4G 3V7

905-713-0772
1-877-263-9153
www.mclarendoors.com
info@mclarendoors.com